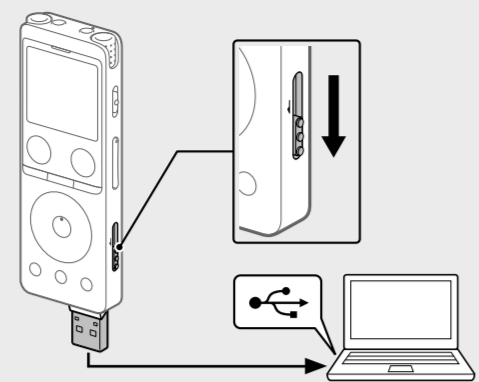


IC Recorder  
Operating Instructions

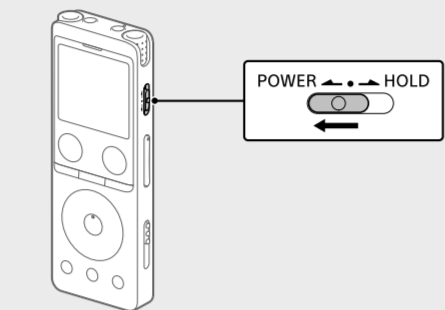
Let's try out your new IC recorder

Charge



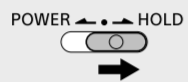
- Charge the IC recorder.**  
Slide the USB slide lever in the direction of the arrow, and insert the USB connector into the USB port of a running computer. When the battery is fully charged, the battery indicator changes from the charging animation to "100%".
- Disconnect the IC recorder.**  
Make sure that the message "Accessing" is no longer on the display window. Then refer to the Help Guide to remove the IC recorder safely.

Power on



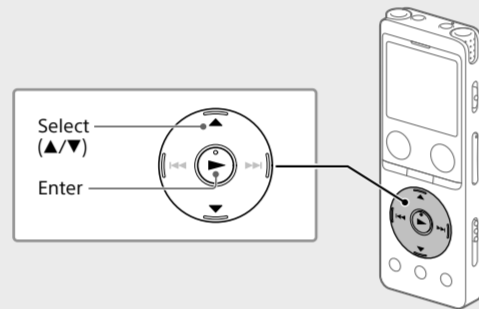
Slide and hold the POWER+HOLD switch in the direction of "POWER" until the window display appears.  
To turn the power off, slide the POWER+HOLD switch to "POWER" and hold it until "Power Off" appears on the display window.

**To prevent unintentional operations (HOLD)**  
Slide the POWER+HOLD switch in the direction of "HOLD."



To release the IC recorder from the HOLD status, slide the POWER+HOLD switch towards the center.

Initial settings



When you power on your IC recorder for the first time, the "Configure Initial Settings" screen appears on the display window. You can then select the display language, set the clock, and turn on/off the beep sound.

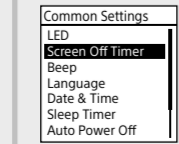
- Press **▶** to start the initial settings.
- Select the display language.  
You can select from the following languages:  
Deutsch (German), English, Español (Spanish), Français (French), Italiano (Italian), Русский (Russian), Türkçe (Turkish)  
\* Default setting
- Set the current year, month, day, hour, and minute.
- Select "Next."
- Select "ON" or "OFF" to turn on or off the beep sound.  
When the initial settings finish, the completion message and then the HOME menu screen appear.

**Notes**

- If you take 30 seconds or longer before proceeding to the next step, the display window will turn off. To turn on the display window for continuing the initial settings, press BACK/HOME.
- You can change any of the initial settings at any time later. For detailed instructions, refer to the Help Guide.

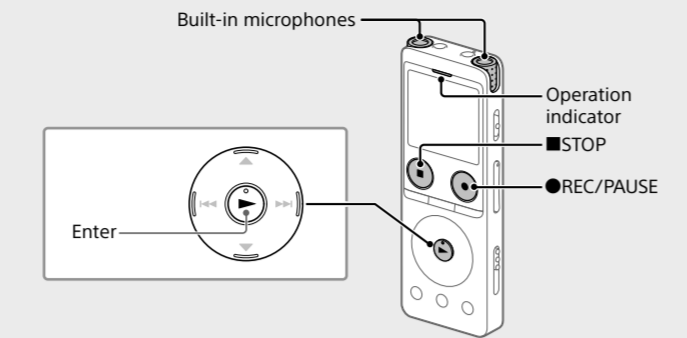
The display window turns off automatically

The "Screen Off Timer" setting on your IC recorder is set to "30 Sec" by default to save battery power. If you leave the IC recorder untouched for 30 seconds, the display window will turn off, but you can still perform any button operations. To turn the display window back on, press BACK/HOME.



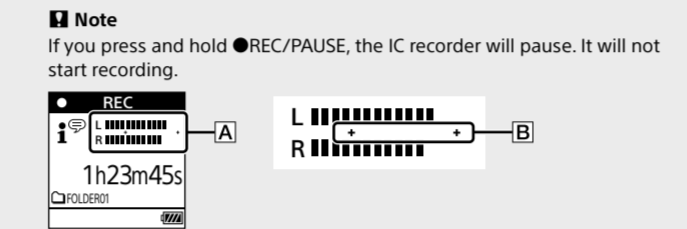
You can keep the display window from turning off or change the default setting to another timer interval. Press and hold BACK/HOME and select **Settings** - "Common Settings" - "Screen Off Timer," and then select "No Auto Screen Off," "15 Sec.," "30 Sec.," "1 Min.," "3 Min.," or "5 Min."

Record



Before you start recording, make sure that the HOLD status is released.  
You can select a recording scene for each situation by selecting "Scene Select" in the OPTION menu.

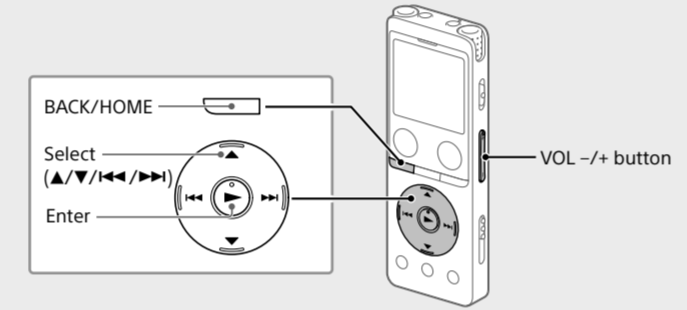
- Select **Record** from the HOME menu.  
The recording standby screen appears.
- Select a storage and a folder to save the recorded file.  
To save the recorded file on the microSD card, you need to change the file storage destination folder. Select "Recording Folder" - "SD Card" from the OPTION menu, and then start recording.
- Turn the IC recorder so that its built-in microphones point in the direction of the target sound source.
- Press **REC/PAUSE**.  
"REC" appears on the display window to indicate that recording has started, and the operation indicator lights in red.



The recording level guide (A) is displayed while recording. The section between + and + (B) is the optimal input level for recording. Please adjust the orientation of the built-in microphones, the distance from the sound source, the microphones' sensitivity setting, or the "Scene Select" setting so that the recording level fits within the optimal range, as illustrated.

- Press **STOP** to stop recording.  
"Saving..." and then recording standby screen appear on the display window.

Listen



- Select **Recorded Files** from the HOME menu.
- Select "Latest Recording," "Search by REC Date," "Search by REC Scene," or "Folders."
- Select your desired file.  
Playback starts and the operation indicator lights in green.
- Press VOL + or VOL - to adjust the volume.
- Press **STOP** to stop playback.

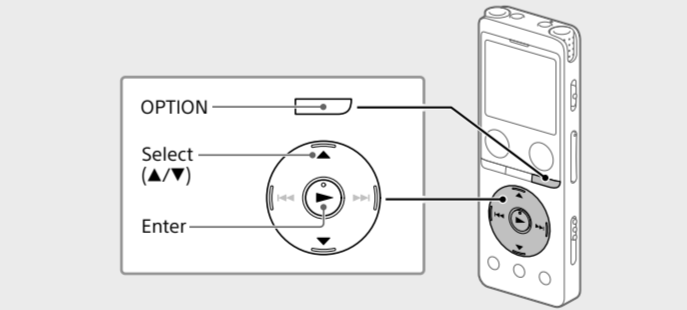
Right after you stopped recording, you can press **▶** to play the file you just recorded.

**To add a track mark**  
You can add a track mark at a point at which you want to divide a file later or locate during playback. You can add a maximum of 98 track marks to each file.  
You can also add track marks during recording.

**Locating the desired playback point quickly (Time Jump, Easy Search)**

- Using the time jump function allows you to move to any of the 10 points throughout the total duration of a file. You can use this function with **◀** or **▶** in the time jump mode.
- Using the easy search function allows you to forward or reverse a fixed number of seconds (10 seconds for forwarding, 3 seconds for reversing) during playback.

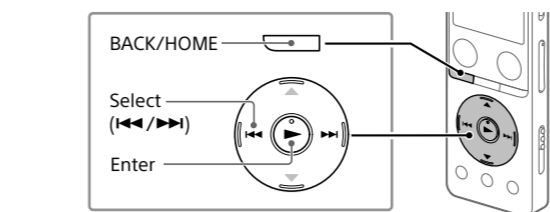
Delete



- Note**
- If you delete a file, you cannot restore it.
- Select the file you want to delete from the list of recorded files or play back the file you want to delete.
  - Select "Delete File" from the OPTION menu.  
"Delete?" appears and the selected file starts playing for your confirmation.
  - Select "Yes."  
"Delete?" appears and stays until the selected file is deleted.

Using the HOME menu

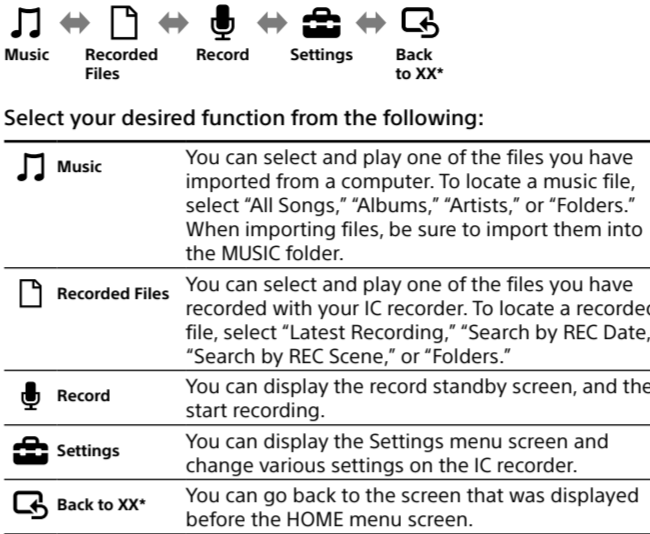
You can use the HOME menu for a variety of operations, including locating and playing a recorded file and changing the settings of your IC recorder.



- Press and hold BACK/HOME.  
The HOME menu screen appears.



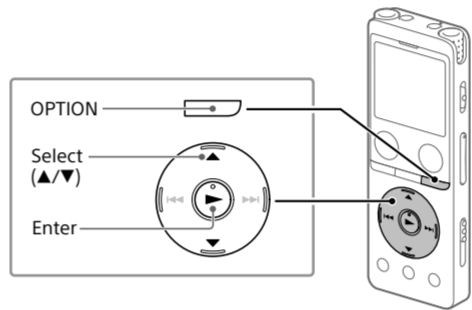
The HOME menu items are aligned in the following sequence.



Press **STOP** to return to the screen displayed before you entered the HOME menu.

Using the OPTION menu

You can use the OPTION menu to perform a variety of functions, including changing the settings of your IC recorder. The available items differ depending on the situation.

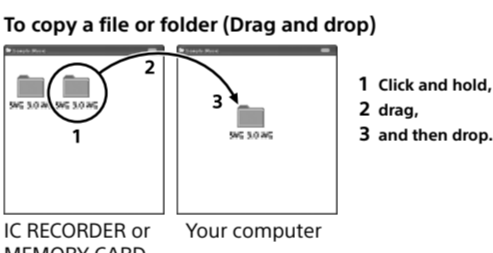


- Select your desired function from the HOME menu, and then press OPTION.
- Select the menu item for which you want to change the setting.
- Select your desired setting option.

Copying files from your IC recorder to a computer

You can copy the files and folders from your IC recorder to a computer to store them.

- Follow the instructions in "Charge" to connect your IC recorder to a computer.
- Drag and drop the files or folders you want to copy from "IC RECORDER" or "MEMORY CARD" to the local disk on the computer.
- Disconnect your IC recorder from the computer.



Installing Sound Organizer 2

Install Sound Organizer on your computer.  
Sound Organizer allows you to exchange files between your IC recorder and your computer.  
Songs imported from music CDs and other media, MP3 and other audio files imported to a computer can also be played and transferred to the IC recorder.

**Notes**

- Sound Organizer is compatible with Windows computers only. It is not compatible with Mac.
- This IC recorder is compatible with Sound Organizer 2 only.
- If you format the built-in memory, all data stored there will be deleted. (The Sound Organizer software installer will also be deleted.)

When installing Sound Organizer, log in to an account with administrator privileges.

- The installation procedure varies depending on the Windows version. The following procedure uses Windows 10 as an example.

- Follow the instructions in "Charge" to connect your IC recorder to a computer.
- Make sure the IC recorder is successfully detected by the computer.  
"Connecting" appears and stays on the IC recorder's display window while the IC recorder is connected to the computer.
- Right-click at the bottom left corner of the desktop, and then click [File Explorer] on the menu.
- Double-click [IC RECORDER] - [FOR WINDOWS].
- Double-click [SoundOrganizer\_V2002] (or [SoundOrganizer\_V2002.exe]).  
Follow the computer's on-screen instructions.
- When the [Welcome to Sound Organizer 2 Installer] window appears, click [Next].
- Make sure that you accept the terms of the license agreement, select [I accept the terms in the license agreement], and then click [Next].
- When the [Setup Type] window appears, select [Standard] or [Custom], and then click [Next].  
Follow the instructions on the screen and set the installation settings when you select [Custom].
- When the [Ready to Install the Program] window appears, click [Install].  
The installation starts.
- When the [Sound Organizer 2 has been installed successfully.] window appears, check [Launch Sound Organizer 2 Now], and then click [Finish].

**Note**  
You may need to restart your computer after installing Sound Organizer 2.

Precautions

**On power**  
DC 3.7V : the built-in rechargeable lithium-ion battery  
DC 5.0V : when charged using USB  
Rated current consumption : 500mA

- On handling**
- Do not leave the unit in a location near heat sources, or in a place subject to direct sunlight, excessive dust or mechanical shock.
  - Should any solid object or liquid fall into the unit, remove the battery and have the unit checked by qualified personnel before operating it any further.
  - When using your IC recorder, remember to follow the precautions below in order to avoid warping the cabinet or causing the IC recorder to malfunction.
    - Do not sit down with the IC recorder in your back pocket.
    - Do not put your IC recorder into a bag with the headphones/earphones cord wrapped around it and subject the bag to strong impact.
  - Be careful not to allow water to splash on the unit. The unit is not waterproof. In particular, be careful in the following situations.
    - When you have the unit in your pocket and go to the bathroom, etc. When you bend down, the unit may drop into the water and may get wet.
    - When you use the unit in an environment where the unit is exposed to rain, snow, or humidity.
    - In circumstances where you get sweaty. If you touch the unit with wet hands or if you put the unit in the pocket of sweaty clothes, the unit may get wet.
  - Listening with this unit at high volume may affect your hearing.
  - For traffic safety, do not use this unit while driving or cycling.
  - Do not use this unit at a place where the inability to hear surrounding sounds may present a danger.
  - You may feel pain in your ears if you use the headphones when the ambient air is very dry.
  - This is not because of a malfunction of the headphones, but because of static electricity accumulated in your body. You can reduce static electricity by wearing non-synthetic clothes that prevent the emergence of static electricity.
  - Do not place this product close to medical devices. This product (including accessories) has magnet(s) which may interfere with pacemakers, programmable shunt valves for hydrocephalus treatment, or other medical devices. Do not place this product close to persons who use such medical devices. Consult your doctor before using this product if you use any such medical device.

- On noise**
- Noise may be heard when the unit is placed near an AC power source, a fluorescent lamp or a mobile phone during recording or playback.
  - Noise may be recorded when an object, such as your finger, etc., rubs or scratches the unit during recording.
- On maintenance**
- To clean the exterior, use a soft cloth slightly moistened in water. Then use a soft dry cloth to wipe the exterior. Do not use alcohol, benzene or thinner.
- If you have any questions or problems concerning your unit, please consult your nearest Sony dealer.

WARNING

- Do not expose the batteries (battery pack or batteries installed) to excessive heat such as sunshine, fire or the like for a long time.
- Do not subject the batteries to extreme low temperature conditions that may result in overheating and thermal runaway.
- Do not dismantle, open or shred secondary cells or batteries.
- In the event of a cell leaking, do not allow the liquid to come in contact with the skin or eyes. If contact has been made, wash the affected area with copious amounts of water and seek medical advice.
- Do not use any charger other than that specifically provided for use with the equipment.
- Secondary cells and batteries need to be charged before use. Always use the correct charger and refer to the manufacturer's instructions or equipment manual for proper charging instructions.
- After extended periods of storage, it may be necessary to charge and discharge the cells or batteries several times to obtain maximum performance.
- Dispose of properly.

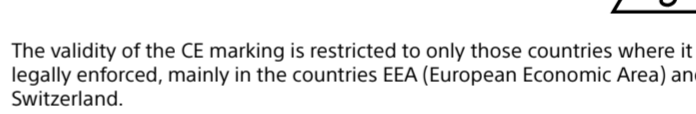
CAUTION

Risk of explosion if battery is replaced by an incorrect type. Dispose of used batteries according to the instructions.

**Notice for the customers: the following information is only applicable to equipment sold in the countries applying EU directives**

This product has been manufactured by or on behalf of Sony Corporation. EU Importer: Sony Europe B.V.  
Inquiries to the EU importer or related to product compliance in Europe should be sent to the manufacturer's authorized representative, Sony Belgium, bijkantoor van Sony Europe B.V., Da Vinciplant 7-01, 1930 Zaventem, Belgium.

High sound pressure  
Hearing damage risk  
Do not listen at high volume levels for long periods



The validity of the CE marking is restricted to only those countries where it is legally enforced, mainly in the countries EEA (European Economic Area) and Switzerland.

This equipment has been tested and found to comply with the limits set out in the EMC regulation using a connection cable shorter than 3 meters.

**Disposal of waste batteries and electrical and electronic equipment (applicable in the European Union and other countries with separate collection systems)**



This symbol on the product, the battery or on the packaging indicates that the product and the battery shall not be treated as household waste. On certain batteries this symbol might be used in combination with a chemical symbol. The chemical symbol for lead (Pb) is added if the battery contains more than 0.004% lead. By ensuring that these products and batteries are disposed of correctly, you will help to prevent potentially negative consequences for the environment and human health which could be caused by inappropriate waste handling. The recycling of the materials will help to conserve natural resources. In case of products that for safety, performance or data integrity reasons require a permanent connection with an incorporated battery, this battery should be replaced by qualified service staff only. To ensure that the battery and the electrical and electronic equipment will be treated properly, hand over these products at end-of-life to the appropriate collection point for the recycling of electrical and electronic equipment. For all other batteries, please view the section on how to remove the battery from the product safely. Hand the battery over to the appropriate collection point for the recycling of waste batteries. For more detailed information about recycling of this product or battery, please contact your local Civic Office, your household waste disposal service or the shop where you purchased the product or battery.

**Notice for users**

- All rights reserved. This manual or the software described herein, in whole or in part, may not be reproduced, translated or reduced to any machine readable form without prior written approval from Sony Corporation.
- What you record is for personal enjoyment and use only. Copyright laws prohibit other forms of use without the permission of the copyright holders.

Specifications

**Capacity (User available capacity)\*1\*2**  
4 GB (approx. 3.20 GB = 3,435,973,837 Byte)

**Maximum recording time\*\*3\*\*4 (Built-in memory)**  
The maximum recording time of all the folders is as follows.

Recording mode	Recording	Recording (while monitoring)	Playback with the built-in speaker	Playback with the headphones
LPCM 44.1 kHz/16 bit (STEREO)	20 hours	12 hours	5 hours	34 hours
MP3 192 kbps (STEREO)	22 hours	13 hours	5 hours	47 hours
MP3 128 kbps (STEREO)	22 hours	13 hours	5 hours	47 hours
MP3 48 kbps (MONO)	22 hours	13 hours	5 hours	47 hours

**Battery Life (a built-in rechargeable lithium-ion battery)\*\*5**  
The battery life spans provided here are all approximate periods of time.

Recording mode	Recording	Recording (while monitoring)	Playback with the built-in speaker	Playback with the headphones
LPCM 44.1 kHz/16 bit (STEREO)	20 hours	12 hours	5 hours	34 hours
MP3 192 kbps (STEREO)	22 hours	13 hours	5 hours	47 hours
MP3 128 kbps (STEREO)	22 hours	13 hours	5 hours	47 hours
MP3 48 kbps (MONO)	22 hours	13 hours	5 hours	47 hours

**Dimensions (w/h/d) (not incl. projecting parts and controls)**  
Approx. 36.6 mm x 102.8 mm x 12.2 mm

**Mass**  
Approx. 48 g

**Temperature/Humidity**

Operating temperature	5°C - 35°C
Operating humidity	25% - 75%
Storage temperature	-10°C - +45°C
Storage humidity	25% - 75%

**Compatible memory cards**

- microSDHC cards from 4 GB to 32 GB
- microSDXC cards of 64 GB or more

\*1 A small amount of the built-in memory is used for file management and therefore not available for user storage.  
\*2 When the built-in memory is formatted with the IC recorder.  
\*3 The maximum recordable time in this topic is provided for your reference only.  
\*4 Default settings for the recording scenes.  
\*5 Measured values acquired under our measurement conditions. These values may decrease depending on the usage conditions.

Trademarks and licenses

- Microsoft, Windows and Windows Media are registered trademarks or trademarks of Microsoft Corporation in the United States and/or other countries.
- macOS is a trademark of Apple Inc., registered in the U.S. and other countries.
- microSD, microSDHC and microSDXC logos are trademarks of SD-3C, LLC.



- All other trademarks and registered trademarks are trademarks or registered trademarks of their respective holders. Furthermore, "TM" and "®" are not mentioned in each in this manual.
- MPEG Layer-3 audio coding technology and patents licensed from Fraunhofer IIS and Thomson.
- This product is protected by certain intellectual property rights of Microsoft Corporation. Use or distribution of such technology outside of this product is prohibited without a license from Microsoft or an authorized Microsoft subsidiary.

**Notes on the License**  
This IC recorder comes with software that is used based on licensing agreements with the owners of that software. Based on requests by the owners of copyright of these software applications, we have an obligation to inform you of the following. Please read the following sections.  
Licenses (in English) are recorded in the built-in memory of your IC recorder. Establish a Mass Storage connection between the IC recorder and a computer to read licenses in the "LICENSE" folder.

**On GNU GPL/LGPL applied software**  
The software that is eligible for the following GNU General Public License (hereinafter referred to as "GPL") or GNU Lesser General Public License (hereinafter referred to as "LGPL") are included in the IC recorder. This informs you that you have a right to have access to, modify, and redistribute source code for these software programs under the conditions of the supplied GPL/LGPL. Source code is provided on the web. Use the following URL to download it. <http://www.sony.net/Products/Linux/>  
We would prefer you do not contact us about the contents of source code. Licenses (in English) are recorded in the built-in memory of your IC recorder. Establish a Mass Storage connection between the IC recorder and a computer to read licenses in the "LICENSE" folder.

