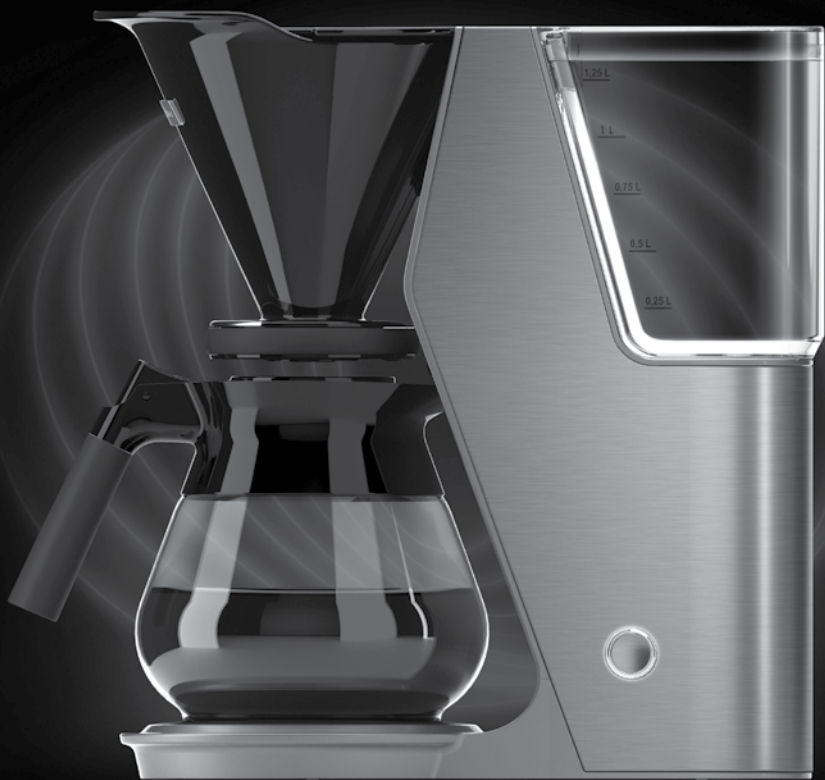




JUNIOR

FILTER COFFEE MACHINE



INSTRUCTION MANUAL

Index

Parts and features	3
Important safety instructions	4
First use of the machine	5
Normal use	6
Cleaning	7
Descaling	8
Coffee jug	8
Troubleshooting	9
Technical specifications	9

Please read this user manual carefully before you use the coffee machine. Keep this user manual for future reference.

Parts and features



Environment



This marking indicates that this product should not be disposed with other household waste throughout the EU. To prevent possible harm to the environment or human health from uncontrolled waste disposal, recycle it responsibly to promote the sustainable reuse of material resources. To return your used device, please use the return and collection systems or contact the retailer where the product was purchased. They can take this product for environmental safe recycling.

- | | |
|-----------------------|-----------------------|
| ① Hot plate | ⑥ Spray head |
| ② Coffee jug | ⑦ Water tank |
| ③ Flow Control | ⑧ START / STOP button |
| ④ Filter basket | ⑨ Measuring spoon |
| ⑤ Lid (filter basket) | ⑩ Spray head key |

Important safety instructions

General safety

- Remove the packaging and check the coffee machine for completeness
 - Read the user manual carefully and keep it for future reference.
 - Check whether the voltage of the coffee machine corresponds to the voltage of the local mains before using the coffee machine.
 - Make sure the coffee machine is placed on a flat and stable surface.
 - Do not use the coffee machine outdoors.
 - Keep the coffee machine away from hot surfaces, moisture and sharp edges.
 - The coffee machine is developed for domestic use.
 - Do not use the coffee machine other than its intended use to avoid potential injuries.
 - The machine can be used by children aged over 8 and by individuals with reduced physical, sensory or mental capacities, or those who lack knowledge or experience, providing that they are under supervision or have received instructions on how to use the machine and understand the hazards involved.
 - Children shall not play with the machine. The machine must not be maintained or cleaned by children younger than 8 years and without supervision.
 - Keep the coffee machine and its cord out of reach of children younger than 8 years.
 - Be aware that the hot plate may become **very hot** during use.
- The coffee machine must be turned off and the plug must be pulled out of the socket when cleaning, not in use or if problems occur during brewing.
 - Never place the machine in a room where the temperature can drop to below 0°C/32°F.
 - Check the coffee machine, cord and plug regularly on any damage.
 - Do not use the coffee machine if the cord, plug or the coffee machine itself is damaged. If damaged it must be repaired by the manufacturer, its service agent or similarly qualified persons in order to avoid hazardous situations.
 - This machine is exclusively designed for domestic use and similar usages.

Product safety


- **Never** touch hot surfaces, always use the handles or buttons of the machine.
- Do not place the coffee jug in a microwave oven.
- The water tank must be filled with fresh cold drinking water, never use warm or hot water.
- Never use polluted, unsafe, or suspicious water.
- Do not fill the water tank with water above the indication for 1.25 litres.

Explanation of safety instructions

INFO

-  Provides important information

WARNING

-  Indicates a hazardous situation which, if not avoided, could result in fatal or serious injury


Special safety

- Do not immerse the coffee machine in water or any other liquid, nor make it wet with a very wet cloth, sponge, or the like.

First use of the coffee machine

1. Place the coffee machine on a flat and stable surface.
2. Put the plug into a socket.
3. Take the water tank from the coffee machine.
4. Open the water tank lid.
5. Fill the removable water tank with fresh cold water, up to the indication for 1.25 litres.






6. Close the water tank lid and put the water tank back in the coffee machine.
7. Ensure the filter basket is firmly and properly placed into position.
 -  **Do not put a filter and/or ground coffee in the filter basket!**
8. Place the coffee jug on the hot plate.
9. Press the START/STOP button once to start the brewing cycle.



10. Set the flow control; make sure it is **not** set on drip stop.



-  **The coffee machine will beep once and the START/STOP button starts blinking.**
11. Let the coffee machine operate until the water tank is empty.
 -  **When the water tank is empty the coffee machine will beep three times after approx. two minutes and the blue bright light of the START/STOP button will lit-up.**
 12. Switch off the coffee machine by pressing the START/STOP button once.
 -  **The coffee machine will beep one time and the blue bright light turns off.**
 13. Wash the coffee jug and the filter basket with warm, soapy water.
 14. Rinse and dry thoroughly and place the coffee jug and filter basket back into position.
 15. The coffee machine is now ready for use.

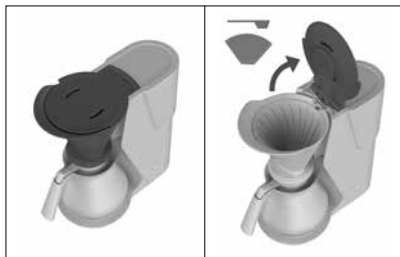
Normal use

1. Take the water tank from the coffee machine.
2. Open the water tank lid.
3. Fill the removable water tank with fresh cold water up to the desired level.
 - ⓘ **The number of litres is clearly marked on the right side of the water tank. The number of cups is marked on the left side of the water tank.**
4. If removed, replace the tank properly on the device.
5. Close the water tank lid.



⚠ **Do not fill the water tank above the maximum capacity indicated with the marking for 1.25 litres.**

6. Open the filter basket.
7. Place the paper coffee filter (type 1x4) in the filter basket.
8. Add the desired amount of ground coffee in the coffee filter. We recommend one measuring spoon of ground coffee per cup.
9. Close the filter basket.



10. Set the flow control. You can choose between 0.75 or 1.25 litres. We recommend to turn the flow control to 0.75 litres for brewing up to 6 cups of coffee and 1.25 litres for brewing over 6 cups of coffee.



⚠ **Check that the filter basket is properly placed in the device!**

11. Place the coffee jug on the hot plate.
12. Press the START/STOP button once to start the brewing cycle.
 - ⓘ **The coffee machine will beep once and the START/STOP button will start blinking.**
13. Let the coffee machine operate until the water tank is empty. Once all the coffee has dripped through, the coffee is ready to be served.



ⓘ **The coffee machine will beep three times and the START/STOP button will show a blue bright light.**

- When the brewing cycle is complete, the coffee machine will keep your coffee warm for approx. 40 minutes.
- After approx. 40 minutes the coffee machine will automatically switch off.

ⓘ **The coffee machine will beep one time and the blue bright light turns off.**

- If you wish to switch off the coffee machine within the keeping-warm period, you have to press the START/STOP button once.
- 14. When you are ready making coffee, take the filter basket from the machine and throw away the used paper filter and coffee grounds.



ⓘ **If you have brewed approx. 60 jugs of coffee it is recommended to descale the machine with Espressions descaling (art.no. EP002) to keep it running smoothly.**

Tips:

- The flow control is a convenient way to serve coffee during the brewing cycle.
- By setting the flow control to 'drip stop' the brewing cycle will be interrupted. The drip stop allows you to remove the coffee jug during the brewing cycle.
- However, it is better to wait until the end of the brewing cycle to ensure an optimum flavour and a high coffee quality.

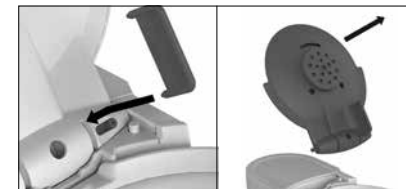


ⓘ **Ensure that the filter basket stays properly in place!**

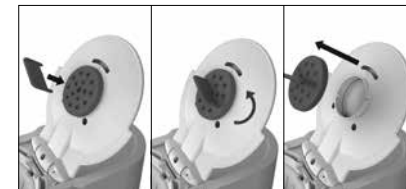
Cleaning

It's important that the machine is kept clean.

1. Unplug the coffee machine and let it cool down.
2. Clean the outside of the coffee machine with a damp cloth (not too wet!).
3. Detach the filter basket.
4. Detach the lid (filter basket) with the special spray-head key.



5. Detach the spray head of the lid (filter basket) with the special spray-head key.



6. Clean the filter basket, lid (filter basket) and spray head with hot, soapy water.
 - ⚠ **Never clean parts of the coffee machine in the dishwasher!**
7. Dry thoroughly and reattach the filter basket, spray head and lid (filter basket).
8. This coffee machine can be supplied with various coffee jugs. Read the supplementary sheet inside the coffee jug for cleaning tips. Afterwards, rinse and dry the jug thoroughly and place it back into position.
9. Never clean the coffee jug with strong detergents, scouring pads or steel wool!

Descaling

Calcium deposits (scale) from water will build up in the coffee machine over time. Consequently the machine has to be descaled regularly (after 60 brewings) in order to preserve the performance and life of the brewer.

1. Fill the removable water tank with 1 part water and 1 part Espressions descaling agent.
 - ⚠ **Do not put a filter and/or ground coffee in the filter basket!**
2. Place the coffee jug on the hot plate.
3. Press the START/STOP button once to start the brewing cycle.
4. Turn the flow control to 'drip stop' halfway the brewing cycle.
 - ⚠ **Ensure that the filter basket stays properly in place! Let the coffee machine descale for 15 to 20 minutes.**
5. Turn back the flow control to 1.25 litres and wait until the brewing cycle is complete.
6. Let the coffee machine complete two more brewing cycles with fresh water to remove any descaling agent and scale residues.
7. If necessary, clean the removable parts (see chapter Cleaning).
8. If necessary, detach the spray head and clean it once more with a descaling agent.
9. Rinse it with fresh, cold water and dry thoroughly.
10. Reattach the spray head.

Coffee jug

Depending on its version the coffee machine either comes with a glass coffee jug or a double-walled synthetic coffee jug.

Use and care

To ensure your coffee jug stays in good condition, please remember the following:

- The coffee machine can be supplied with various coffee jugs. Read the supplementary sheet inside the coffee jug for the appropriate rinsing and cleaning tips.
- Never clean the coffee jug with strong detergents, scouring pads or steel wool!

i *Between the walls of the double-walled jug, water vapour could condense; this is a normal process and has no effect on the functioning.*



Glass coffee jug
Comes standard

Double-walled synthetic coffee jug
Optional art.no. EP1010

Trouble shooting

Problem	Cause / Solution
The machine does not start brewing and the START/STOP button keeps blinking.	<ul style="list-style-type: none"> • The water tank is still empty and needs to be filled with fresh water. • The flow control is still set on its drip stop function. • The water tank is not in place.
The machine does not start brewing and the START/STOP button keeps blinking fast.	<ul style="list-style-type: none"> • The lid (filter basket) has been opened during the brewing cycle.
The brewing takes longer and longer	<ul style="list-style-type: none"> • Descale the machine.
The machine makes more noise than before.	<ul style="list-style-type: none"> • Descale the machine.
The machine produces more steam than before.	<ul style="list-style-type: none"> • Descale the machine.

Technical specifications

Capacity:	10 cups, 1.25 litres
Brewing time:	approximately 6 minutes
Power rating:	230V 50-60 Hz 1550 W
Dimensions (hxdxw):	340 x 320 x 170 mm



Do you need help?

Contact us or visit our website

IT&M

Business number 6066

Park Forum 1110


NL-5657 HK Eindhoven

The Netherlands

Mail: info@itmonline.nl

Website: www.itmonline.nl

Telephone: +31 40 290 11 30

 **Espressions** is a registered trademark of IT&M b.v.

Due to minor changes in design or otherwise, the product may differ from the one shown in this leaflet.
© 2016 IT&M B.V.

