

78201/**/P7



Gebruiksaanwijzing
Notice d'emploi
Benutzerhandbuch
User manual
Manual de usuario

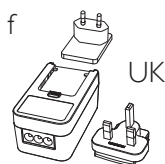
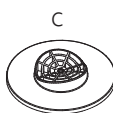
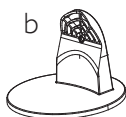
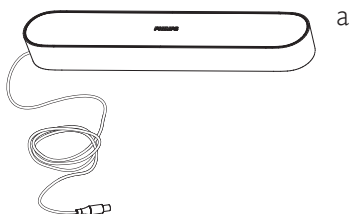


HUE serial number



PHILIPS

Incl.



www.meethue.com/getstarted



NL

1 Installeer het Hue systeem

Je hebt nodig:



1.1 Installeer de Hue Play lichtbakken **A1**

1.2 Verbind de Hue Bridge met de wifi-router.



3 Installeer Hue Sync om de configuratie van entertainment te voltooien.

Je hebt nodig:



Laptop

3 Download en installeer de Philips Hue Sync app op je pc/Mac en ga ervan genieten.



meethue.com/hue-sync

Mac® is een handelsmerk van Apple Inc., geregistreerd in de VS en andere landen.

2 Installeer Hue app en configureer entertainment

Je hebt nodig:



Hue app

2.1 Download en open de Hue-app. Volg de instructies om de nieuwe lichten aan te sluiten.

www.meethue.com

2.2 Stel een entertainmentruimte in de Philips Hue app in. (in je smartphone/tablet)

www.meethue.com/entertainment

4 Geniet van een nog betere kijkbeleving op je TV

Je hebt nodig:



Of stream naar je TV van PC of Mac® met:

Lees meer over Hue-partners en andere manieren om van Hue-entertainment te genieten op www.meethue.com/entertainment

FR

1 Configurez votre matériel

Vous avez besoin de:



1.1 Configurez votre système Hue Play. **A1**

1.2 Connectez le pont Hue à votre routeur.



3 Installez Hue Sync pour terminer la configuration de loisirs

Vous avez besoin de:



Ordinateur portable

3 Téléchargez et installez Hue sync pour votre PC ou Mac, vous pouvez ensuite en profiter.



meethue.com/hue-sync

Mac® est une marque déposée de Apple Inc., enregistrée aux États-Unis et dans d'autres pays.

2 Installez l'application Hue et configurez les loisirs

Vous avez besoin de:



Application Hue

2.1 Téléchargez et ouvrez l'application Philips Hue, suivez les instructions pour connecter les nouvelles lampes.

www.meethue.com

2.2 Configurez l'espace loisirs dans l'application Philips Hue. (sur votre smartphone / tablette)

www.meethue.com/entertainment

4 Profitez du divertissement depuis votre TV

Vous avez besoin de:



Ordinateur portable (non fourni)

Ou basculez votre PC ou Mac® sur votre TV avec :

Découvrez en plus sur les partenaires Hue et les autres façons de profiter des loisirs Hue sur www.meethue.com/entertainment

DE

1 Eine Installation von Hue Play

Dafür benötigen Sie:



11 Richten Sie **Hue Play** Lichtbalk(en) ein.

12 Eine Verbindung zwischen der **Hue Bridge** und Ihrem **Router**.



3 Installieren Sie Hue Sync, um die Einrichtung der Unterhaltungsfunktionen abzuschließen

Dafür benötigen Sie:



3 Herunterladen und Genießen von **Hue Sync** für Ihren PC oder Mac.



meethue.com/hue-sync

Mac® ist eine eingetragene Marke von Apple Inc. in den USA und anderen Ländern.

2 Installieren Sie die Hue App und richten Sie die Unterhaltungsfunktionen ein.

Dafür benötigen Sie:



2.1 Laden Sie die **Hue App** herunter und öffnen Sie sie, und folgen Sie den Anweisungen zum Anschließen neuer Leuchten.

www.meethue.com

2.2 Richten Sie einen **Unterhaltungsbereich** in der **Philips Hue App** ein.

(Bei Ihrem Smartphone/Tablet)

4 Genießen Sie Unterhaltung am Fernsehgerät

Dafür benötigen Sie:



Oder streamen Sie vom **PC oder Mac®** auf Ihr Fernsehgerät mit:

Erfahren Sie mehr über **Hue Partner** und andere Methoden, **Hue Unterhaltung** zu genießen, auf www.meethue.com/entertainment

EN

1 Set up your hardware

You will need:



11 Set up **Hue Play** light bar(s)

12 Connect the **Hue bridge** to your **Router**.



3 Install Hue Sync to complete your entertainment set up

You will need:



3 Download and install **Hue sync** for your PC or Mac® and enjoy.



meethue.com/hue-sync

Mac® is a trademark of Apple Inc. registered in the U.S. and other countries.

2 Install Hue app and set up entertainment

You will need:



2.1 Download and open the **Hue app** and follow the instructions to connect new lights.

www.meethue.com

2.2 Set up **entertainment area** in the **Philips Hue app**.

(on your smartphone/tablet)

www.meethue.com/entertainment

4 Enjoy entertainment from TV

You will need:



Or stream to your TV from **PC or Mac®**

Find out more about **Hue partners** and other ways to enjoy **Hue entertainment** on www.meethue.com/entertainment

ES

1 Configura el hardware

Necesitarás:

1.1 Configura tu sistema **Hue Play**. 1.2 Conectar el **Hue Bridge** a tu **router**.

3 Instala Hue Sync para completar la configuración del ocio

Necesitarás:

3 Descarga e instala **Hue sync** para tu PC o Mac® y disfruta.

Mac® es una marca comercial de Apple Inc., registrada en EE. y en otros países.

2 Instala la aplicación Hue y configura el ocio

Necesitarás:



Aplicación Hue

2.1 Descargar y abrir la **aplicación Hue** y seguir las instrucciones **para conectar luces nuevas**.
2.2 Configura el **área de ocio** en la aplicación **Philips Hue**.
(En tu smart phone/tableta)

4 Disfruta del ocio en tu televisor

Necesitarás:

O transmite a tu televisor desde tu **PC o Mac®** con:

Find out more about **Hue partners** and other ways to enjoy **Hue entertainment** on www.meethue.com/entertainment

PT

1 Configure o seu hardware

Precisarás de:

1.1 Configure o seu sistema **Hue Play**. 1.2 Conectar a **Hue Bridge** ao seu **router**.

3 Instale a Hue Sync para concluir a configuração do sistema de entretenimento

Precisará de:



Computador portátil

3 Transfira e instale a **Hue Sync** no seu PC ou Mac® e desfrute.

Mac® é uma marca comercial de Apple Inc., registrada nos E.U.A. e em outros países.

2 Instale a aplicação Hue e configure o sistema de entretenimento

Precisará de:



Aplicação Hue

2.1 Transferir e abrir a **aplicação Hue** e seguir as instruções **para conectar novas luzes**.
2.2 Configure a **área de entretenimento** na aplicação **Philips Hue**.
(no seu smart phone/tableta)

4 Aproveite o entretenimento da TV

Precisará de:



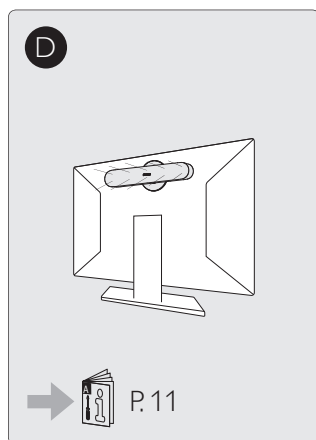
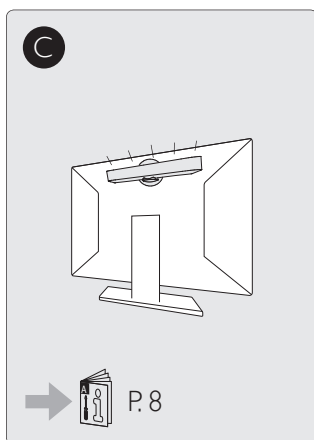
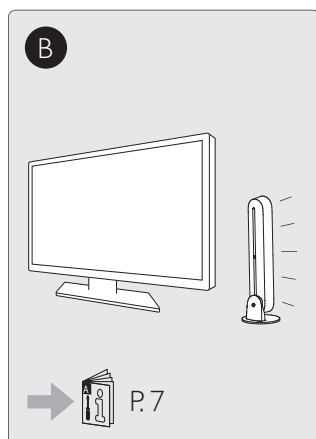
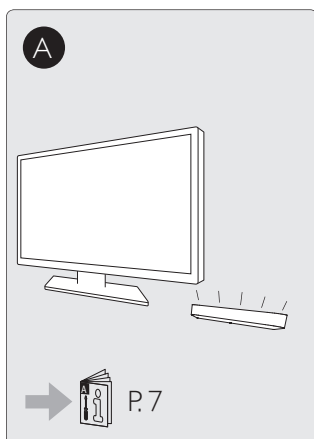
Computador portátil

(não incluído)

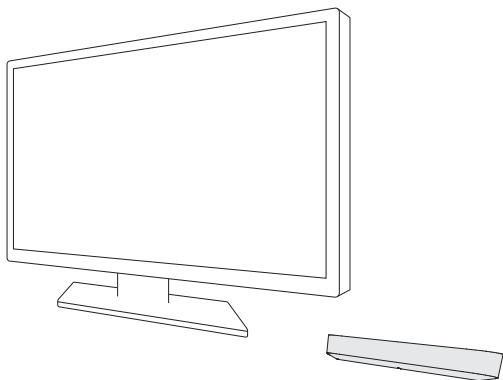
TV

Ou efetue a transmissão para a TV a partir do PC ou Mac® com:

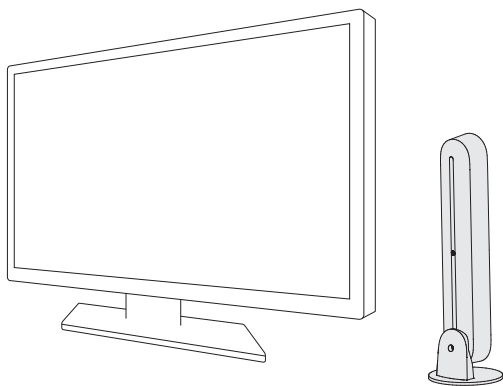
Descubra mais sobre os **parceiros Hue** e outras formas de desfrutar do **entretenimento Hue** em www.meethue.com/entertainment

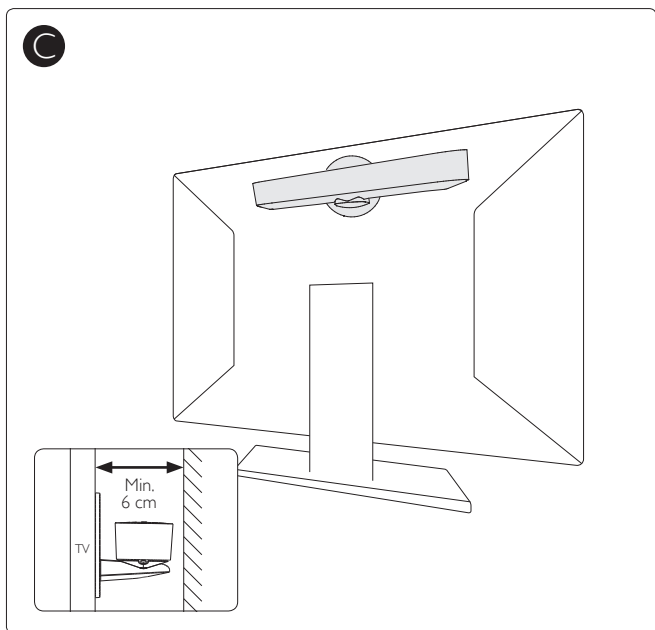
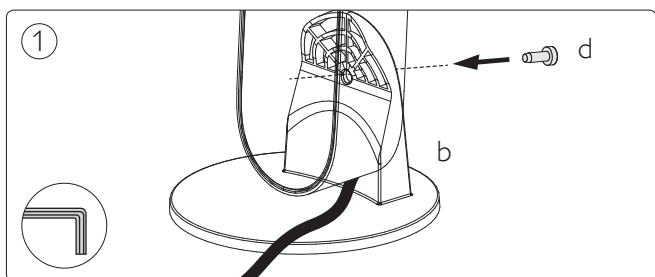


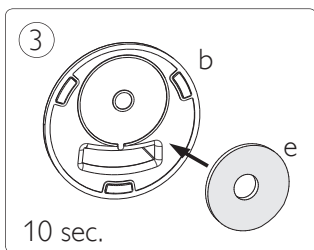
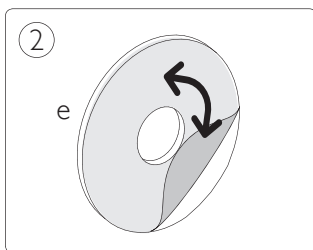
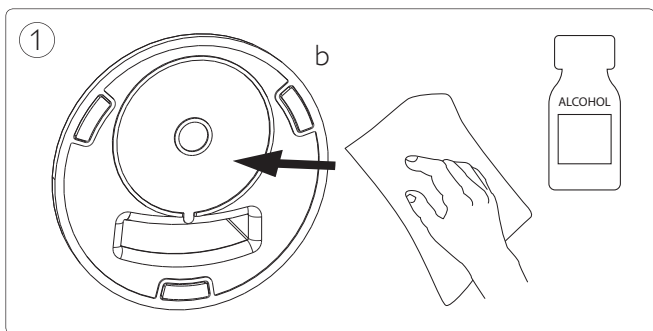
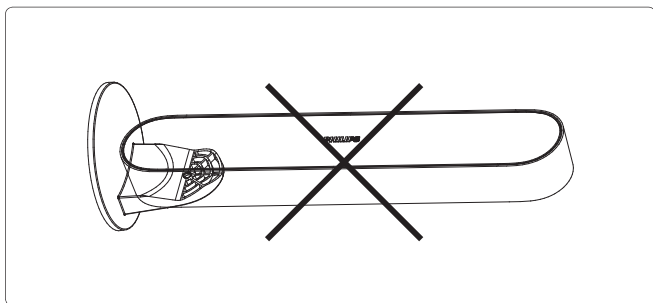
A

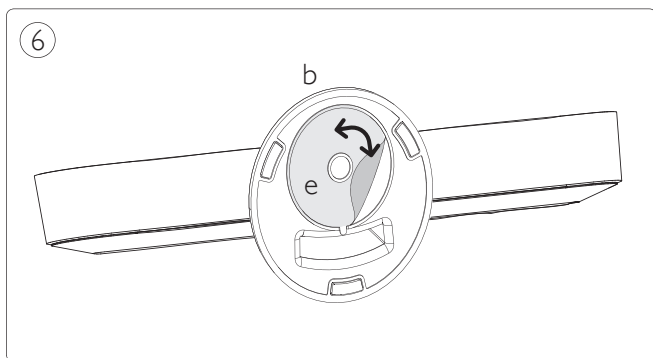
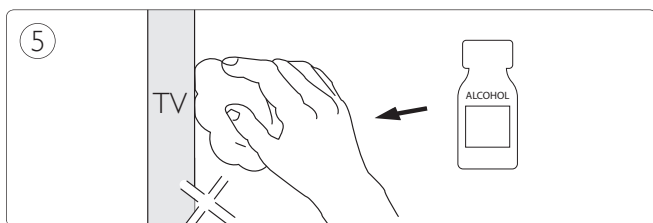
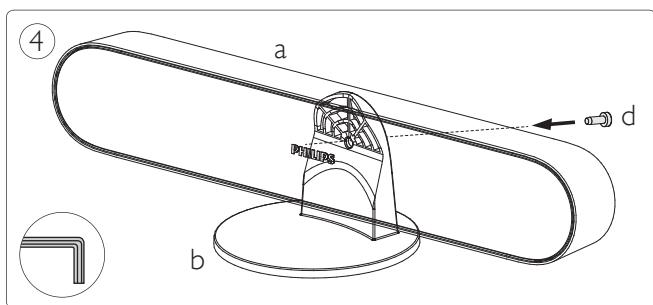


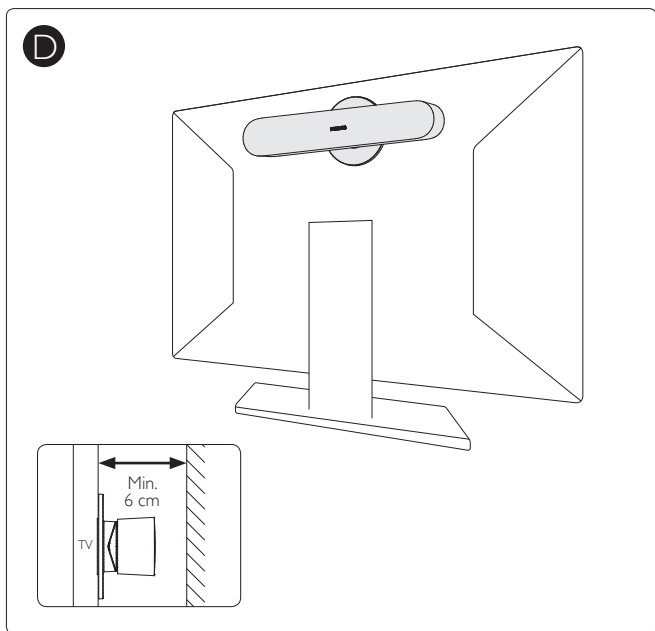
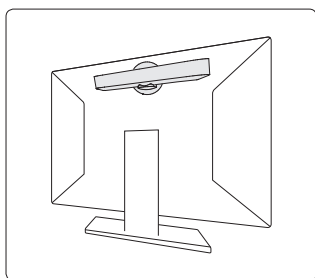
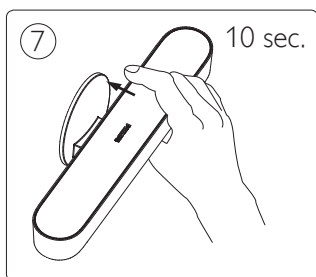
B

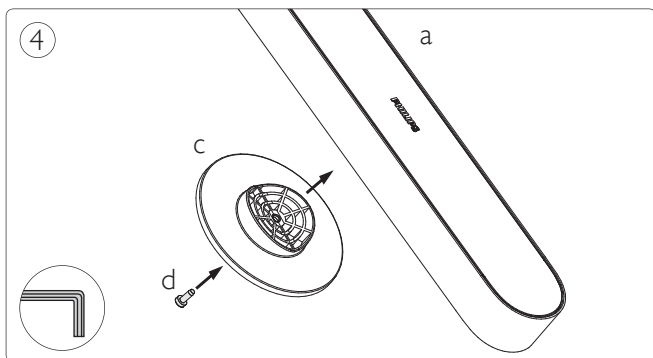
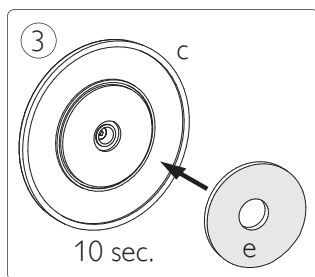
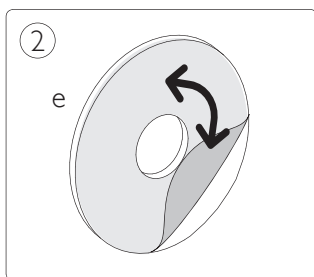
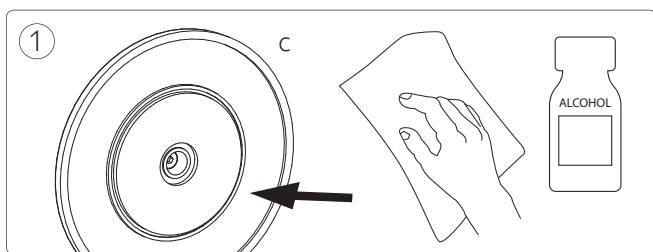


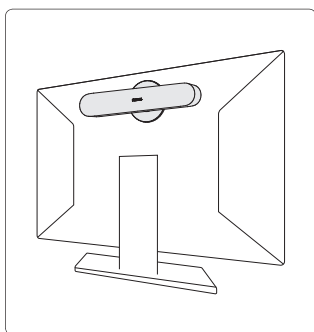
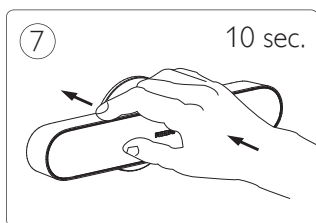
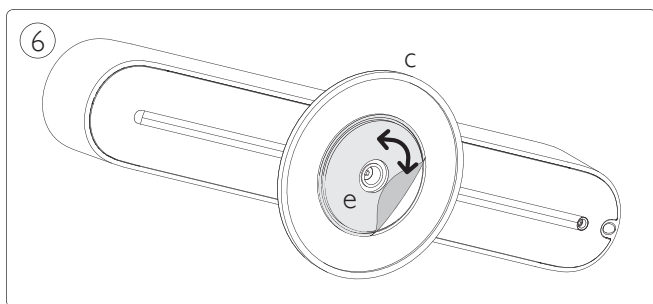
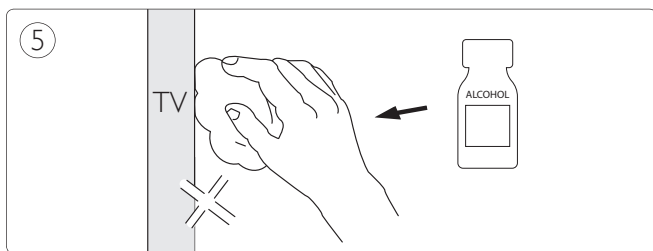


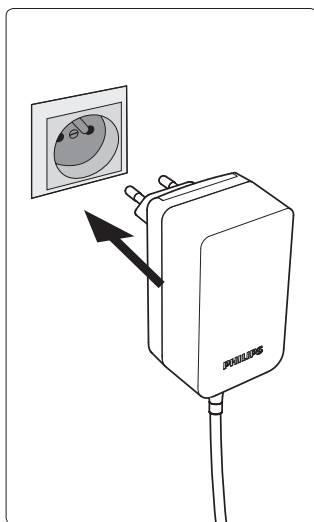
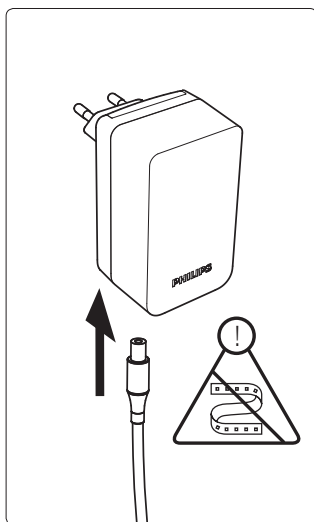
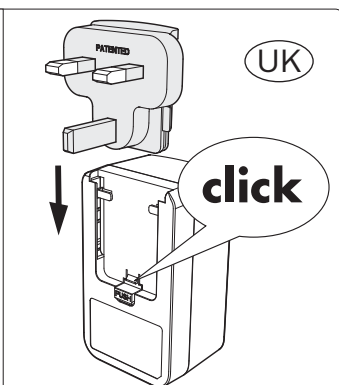
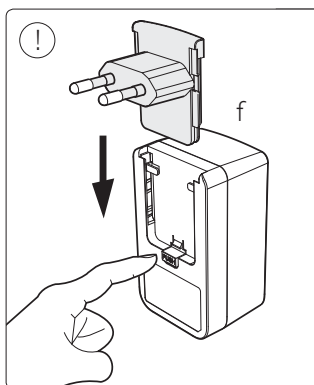


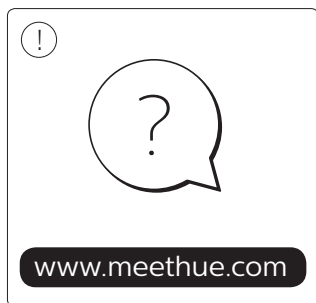
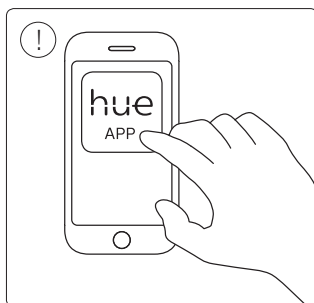
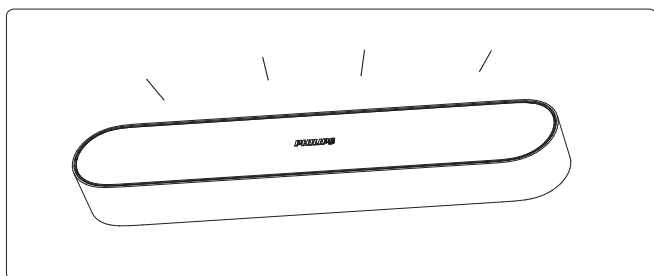














Philips Lighting Contact Centre
Int. Business Reply Service
I.B.R.S. / C.C.R.I. Numéro 10461
5600 VB Eindhoven
Pays-Bas / The Netherlands

www.meethue.com/getstarted
www.philips.com
☎ +800 7445 4775

440402910621
Last update: 16/07/18